



The Intelligent Surveillance Solution

Hardware & Software NDVR Installation Guide

Ver. 6.1.1

Table of Contents

TABLE OF CONTENTS

TABLE OF CONTENTS 1

6000S/7000S SERIES2

 Product Specification2

 System Requirement2

 Hardware Installation.....4

 Maximum I/O Cards support for 6000S/7000S.....6

7100 SERIES7

 Product Specification7

 System Requirement7

 Hardware Installation.....8

8000HD SERIES10

 Product Specification10

 System Requirement10

 Hardware Installation.....11

DRIVER INSTALLATION13

SOFTWARE INSTALLATION15

SOFTWARE INSTALLATION – EXPRESS MODE21

SOFTWARE INSTALLATION – FAILOVER AGENT (STANDARD MODE)24

SOFTWARE INSTALLATION – FAILOVER AGENT (EXPRESS MODE)29

APPENDIX - MINIMUM HARDWARE REQUIREMENT.....33

6000S/7000S SERIES

Product Specification

| Model | 6016S | 6008S | 6004S |
|-------------------------|---|-------------------------------|-------------------------------|
| Display Rate | 480fps(NTSC); 400fps (PAL) | 240fps(NTSC); 200fps (PAL) | 120fps(NTSC); 100fps (PAL) |
| Recording Rate (CIF) | 480fps(NTSC); 400fps (PAL) | 240fps(NTSC); 200fps (PAL) | 120fps(NTSC); 100fps (PAL) |
| Maximum Card | 4 | 4 | 4 |
| Video Input | 16 | 8 | 4 |
| Audio Input | 16 | 8 | 4 |
| Video Resolution | NTSC: 176x120; 352x240; 704x480 PAL: 176x144; 352x288; 704x576 | | |
| Compression Format | Hardware Compression H.264 | | |
| | 7016S | 7008S | 7004S |
| Display Rate | 480fps(NTSC); 400fps (PAL) | 240fps(NTSC); 200fps (PAL) | 120fps(NTSC); 100fps (PAL) |
| Recording Rate (D1) | 480fps(NTSC); 400fps (PAL) | 240fps(NTSC); 200fps (PAL) | 120fps(NTSC); 100fps (PAL) |
| Maximum Card | 4 | 4 | 4 |
| Video Input | 16 | 8 | 4 |
| Audio Input | 16 | 8 | 4 |
| Video Resolution | NTSC: 176x120; 352x240; 704x480 PAL: 176x144; 352x288; 704x576 | | |
| Compression Format | Hardware Compression H.264 | | |

System Requirement

The system requirement depends on the number of camera connections and the total bit rate of the IP cameras. Please refer [Appendix - Minimum Hardware Requirement](#) or check NUUO Calculator on <http://support.nuuo.com/calculator/>

Hardware Installation

Caution



- The electronic components within the unit are sensitive to damage from Electro-Static Discharge (ESD). Please take precautions at all times when handling the unit or its sub-assemblies.
 - Proper Surge solution is needed for outdoor application. It provides protection from damaging transient voltage surges and spikes.
-

Hardware Installation

Step1: Insert the card onto an empty PCI-e slot. Connect the **Audio/Video Cable** to the connector.

Note 1: The audio input connectors are with red wires and marked of “A” on them (such as “A1/9”); the video input connectors are with black wires and marked of “V” (such as “V8/16”).

Note 2: You need to power down the PC before you insert the card.

Step 2: Connect the **Watchdog wire** to the **reset** connector on the main board.

Note: With the **Watchdog Wire** connected, the system will be restarted if any abnormal conditions.

Step 3: Turn on your PC and start Windows.

Step 3: Insert the included Software CD into CD-ROM.

Step 4: Refer the section Driver Installation on page 18 to install driver.

Step 5: After driver is installed, restart your PC.

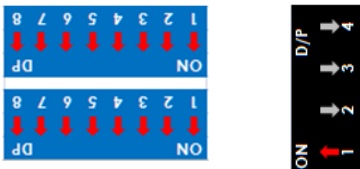
Optional I/O Card: refer to the figures on the following pages.

Step 1: Fix the IO card onto your PC.

Step 2: Connect the Capture Card and the I/O Card with an included ribbon cable (**2.00mm** IDC cable).

Note 1: The default configuration of blue slide switch on I/O Card as below.

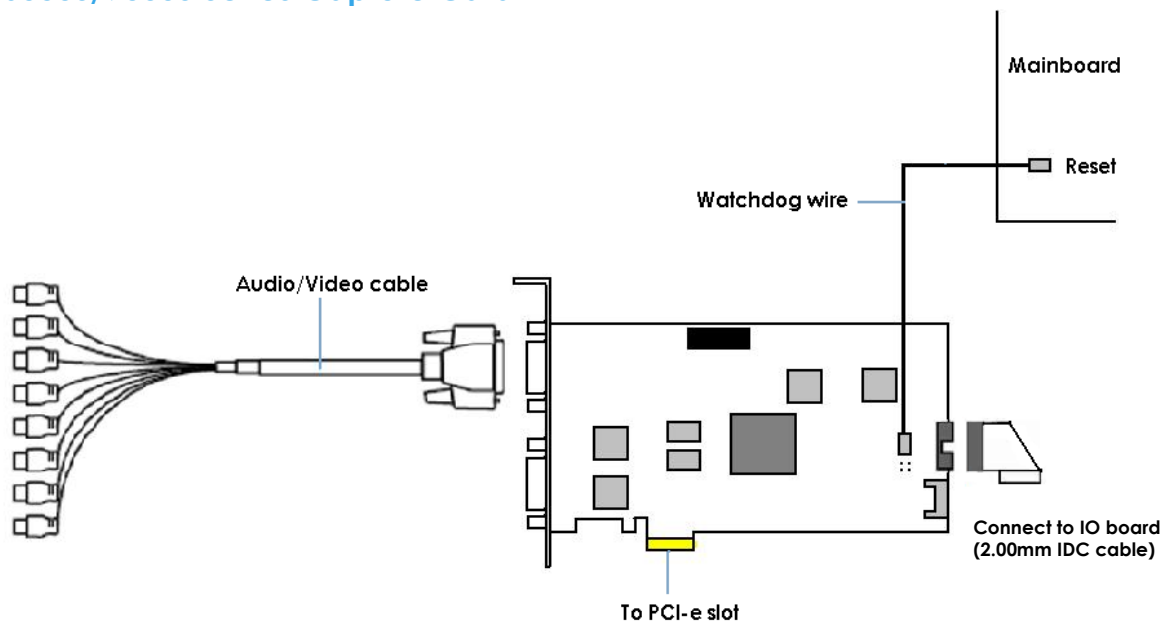
Note 2: If you only use one I/O card to connect with one of 6000S/7000S cards, please make sure the configuration of the black slide switch as below.



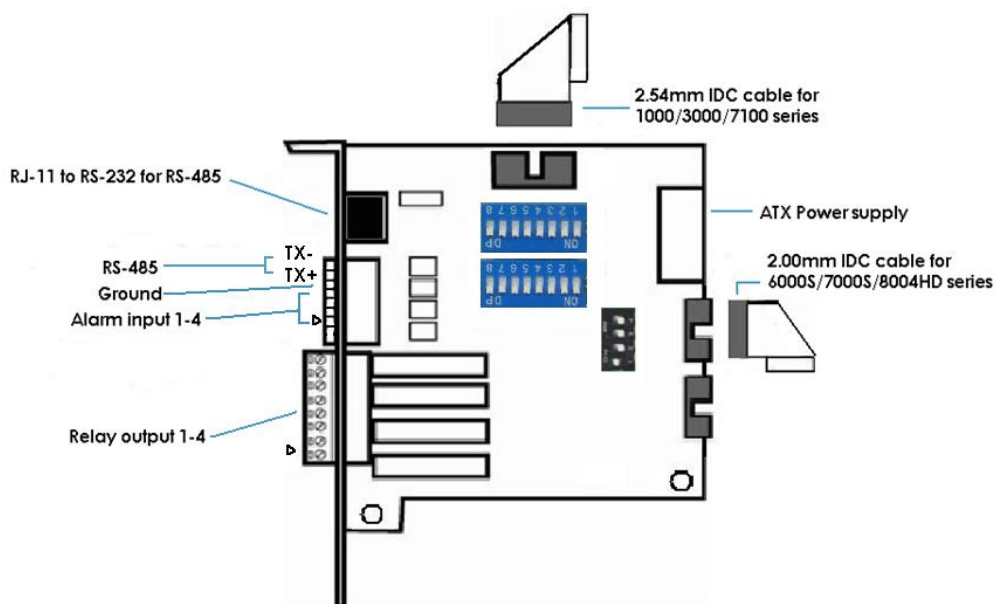
Maximum optional I/O Card support:

6000S/7000S can support maximum 4 I/O cards. Please refer to figures on the following pages.

6000S/7000S Series Capture Card

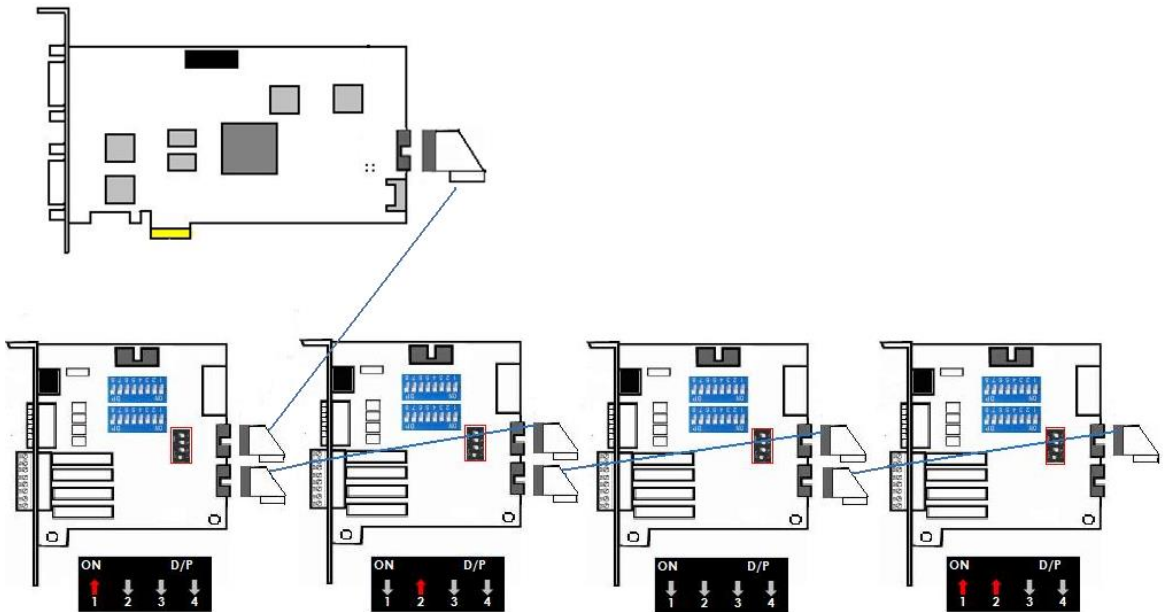


I/O card



Note: Please do not connect 2 capture cards in one IO board at the same time.

Maximum I/O Cards support for 6000S/7000S



Note: If you use more than one IO card, please make sure the configuration of each black switch as above.

7100 SERIES
Product Specification

| | 7116 | 7108 |
|----------------------------|--|-------------------------------|
| Display Rate | 480fps(NTSC); 400fps (PAL) | 240fps(NTSC); 200fps (PAL) |
| Recording Rate (D1) | 480fps(NTSC); 400fps (PAL) | 240fps(NTSC); 200fps (PAL) |
| Maximum Card | 1 | 1 |
| Video Input | 16 | 8 |
| Audio Input | 16 | 8 |
| Video Resolution | NTSC: 176x120; 352x240; 704x480 PAL: 176x144; 352x288; 704x576 | |
| TV Output Rate | w/ HDMI: RCA & HDMI: 10fps w/o HDMI: RCA: 25fps Only HDMI: HDMI: 14fps | |
| Compression Format | Hardware Compression H.264 | |

System Requirement

The system requirement is depend on the number of camera connections and the total bit rate of the IP cameras. Please refer [Appendix - Minimum Hardware Requirement](#) or check NUUO Calculator on <http://support.nuuo.com/calculator/>

Caution



- The electronic components within the unit are sensitive to damage from Electro-Static Discharge (ESD). Please take precautions at all times when handling the unit or its sub-assemblies.
- Proper Surge solution is needed for outdoor application. It provides protection from damaging transient voltage surges and spikes.

Hardware Installation

Step1: Insert the card onto an empty PCI-e slot. Connect the **Audio/Video Cable** to the connector.

Note 1: The audio input connectors are with red wires and marked of “A” on them (such as “A1/9”); the video input connectors are with black wires and marked of “V” (such as “V8/16”).

Note 2: You need to power down the PC before you insert the card.

Step 2: Connect the **Watchdog wire** to the **reset** connector on the main board.

Note: With the **Watchdog Wire** connected, the system will be restarted if any abnormal conditions.

Step 3: Turn on your PC and start Windows.

Step 3: Insert the included Software CD into CD-ROM.

Step 4: Refer the section Driver Installation on page 18 to install driver.

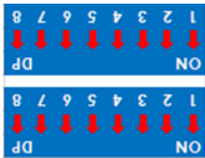
Step 5: After driver is installed, restart your PC.

Optional I/O Card: refer to the figures on the following pages.

Step 1: Fix the IO card onto your PC.

Step 2: Connect the Capture Card and the I/O Card with an included ribbon cable (**2.54mm** IDC cable).

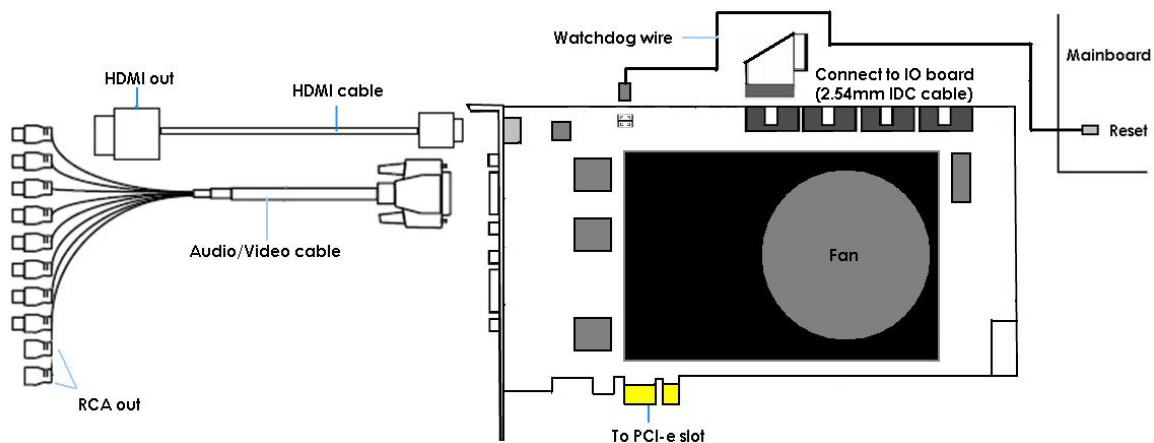
Note 1: The default configuration of blue slide switch on I/O Card as below.



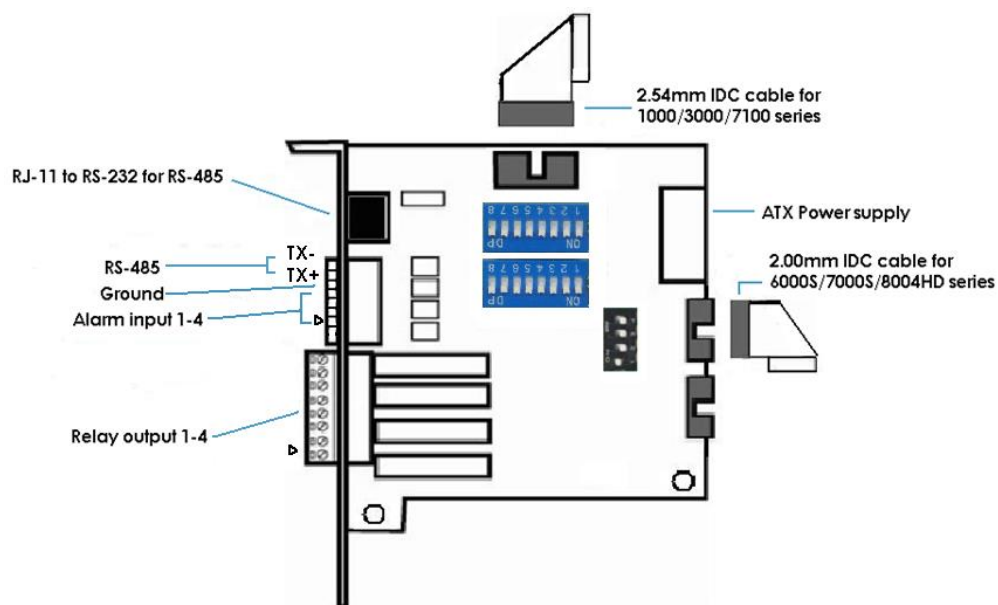
Note 2: Before install SCB-7100 Series cards, please connect HDMI cable first then it would be easier to fix the card onto the PCI-e slot.

Note 3: Some chassis may not be suitable for installing SCB-7100 series due to the original design, please check the dimension of the chassis before installing.

7100 Series Capture Card



I/O card



Maximum I/O Cards support for 7116

Please refer to page 5 [Maximum I/O Cards support for G3-3016](#)

8000HD SERIES
Product Specification

| 8004HD | |
|--------------------|-----------------------------------|
| Display Rate | 120fps(NTSC); 100fps(PAL) |
| Recording Rate | 1080P@120(NTSC) 1080P@100(PAL) |
| Maximum Card | 4 |
| Video Input | 4 |
| Audio Input | 0 |
| Video Resolution | 1080P30/25 720P60/50/30/25 |
| Compression Format | Hardware Compression H.264 |

System Requirement

The system requirement is depend on the number of camera connections and the total bit rate of the IP cameras. Please refer [Appendix - Minimum Hardware Requirement](#) or check NUUO Calculator on <http://support.nuuo.com/calculator/>

Caution



- The electronic components within the unit are sensitive to damage from Electro-Static Discharge (ESD). Please take precautions at all times when handling the unit or its sub-assemblies.
 - Proper Surge solution is needed for outdoor application. It provides protection from damaging transient voltage surges and spikes.
-

Hardware Installation

Step1: Insert the card onto an empty PCI-e slot. Connect the **BNC Cable** (not in product content) to the connector.

Note: You need to power down the PC before you insert the card.

Step 2: Connect the **Watchdog wire** to the **reset** connector on the main board.

Note: With the **Watchdog Wire** connected, the system will be restarted if any abnormal conditions.

Step 3: Turn on your PC and start Windows.

Step 3: Insert the included Software CD into CD-ROM.

Step 4: Refer the section Driver Installation on page 18 to install driver.

Step 5: After driver is installed, restart your PC.

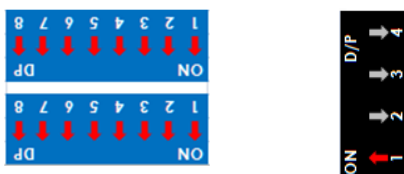
Optional I/O Card: refer to the figures on the following pages.

Step 1: Fix the IO card onto your PC.

Step 2: Connect the Capture Card and the I/O Card with an included ribbon cable (**2.00mm** IDC cable).

Note 1: The default configuration of blue slide switch on I/O Card as below.

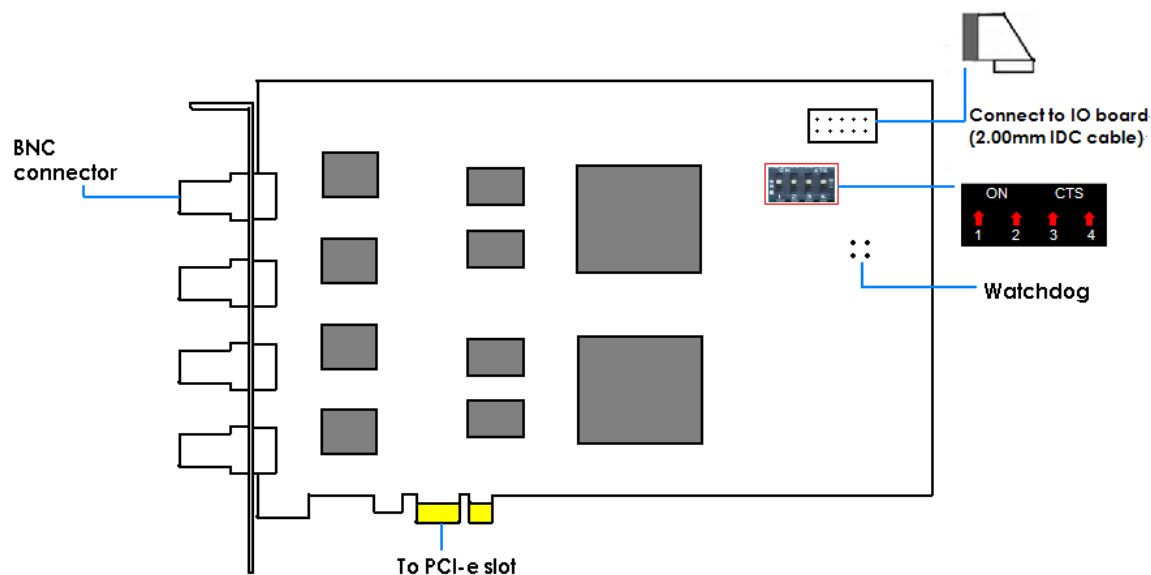
Note 2: If you only use one I/O card to connect with an 8004HD card, please make sure the configuration of the black slide switch as below.



Maximum optional I/O Card support:

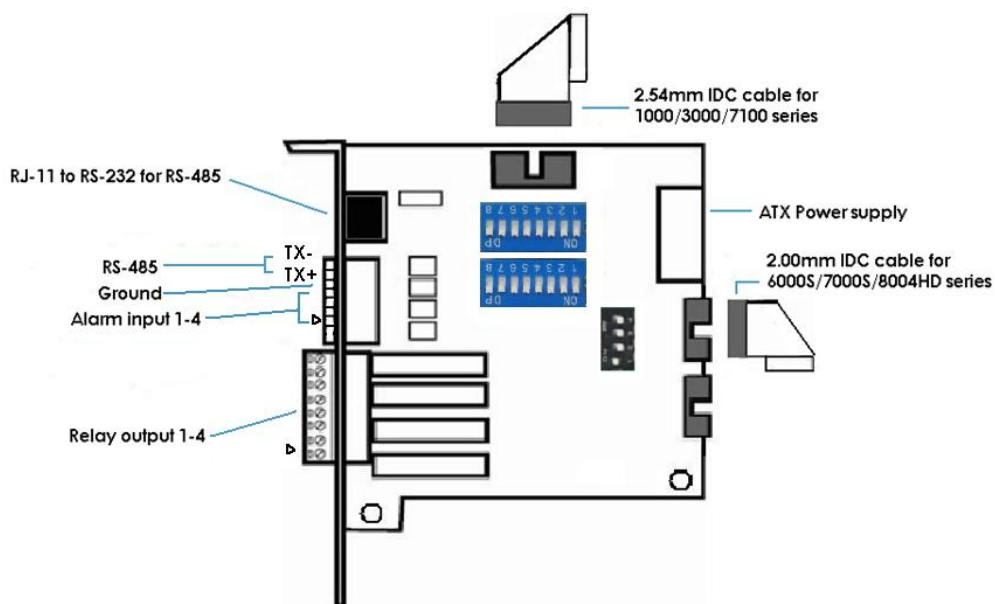
Please refer to page 11 [Maximum I/O Cards support for 6000S/7000S](#)

8004HD Card



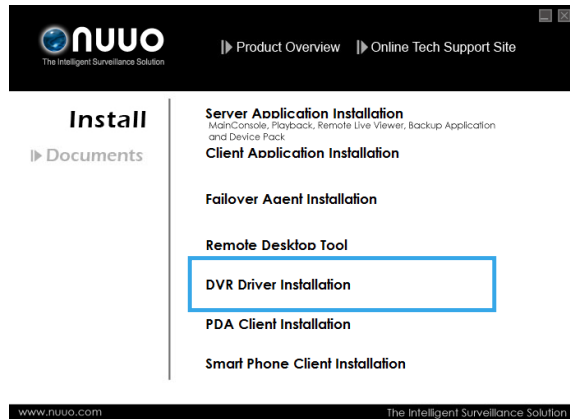
Note: The default configuration of the black switch on 8004HD card is as above. Do not adjust it.

I/O card



DRIVER INSTALLATION

Step 1: Insert the Installation CD. Run autostartup.exe  from the CD-ROM directly to start the installation.

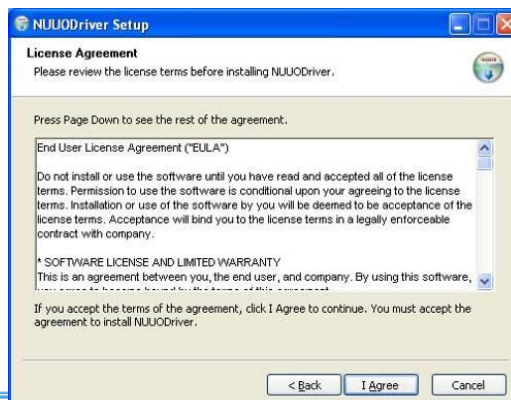


Step 2: Select “DVR Driver Installation” then click on it.

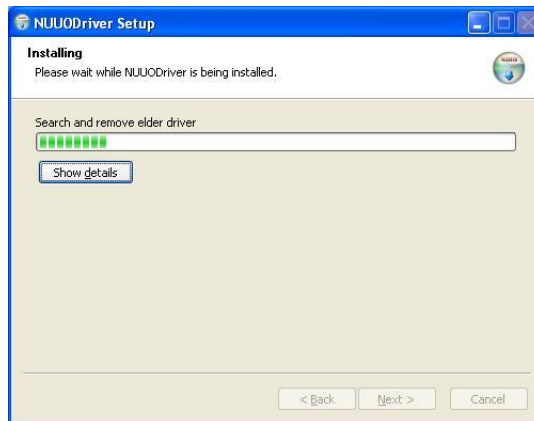
Step 3: In the NUUODriver Setup Wizard dialog box, click Next to continuous.



Step 4: Check the “License agreement”. Click “I Agree” to continuous.



Step 5: Installing NUUODriver.

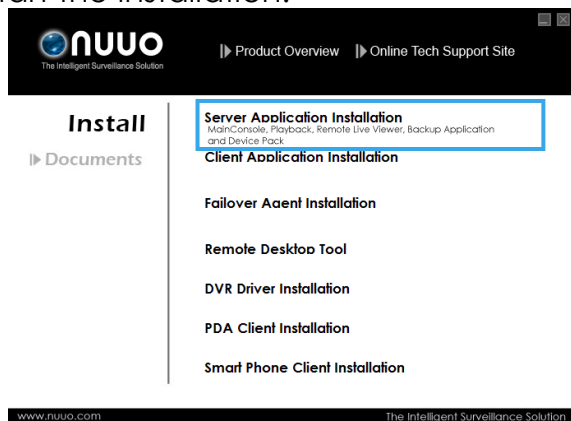


Step 6: Click “**Finish**” after installing the system completely, and then choose to reboot now or later.



SOFTWARE INSTALLATION

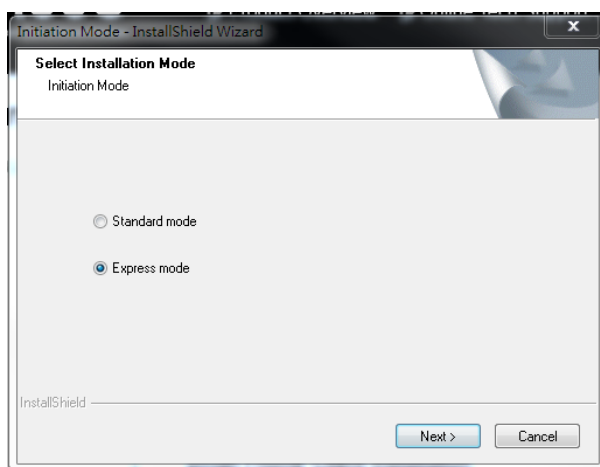
Step 1: Insert the Installation CD. Run Autorun Tool from the CD-ROM directly to start the installation.



Step 2: Select "Server Application Installation" then click on it.

Step 3: In the InstallShield Wizard dialog box, select language and click **Next** to continuous.

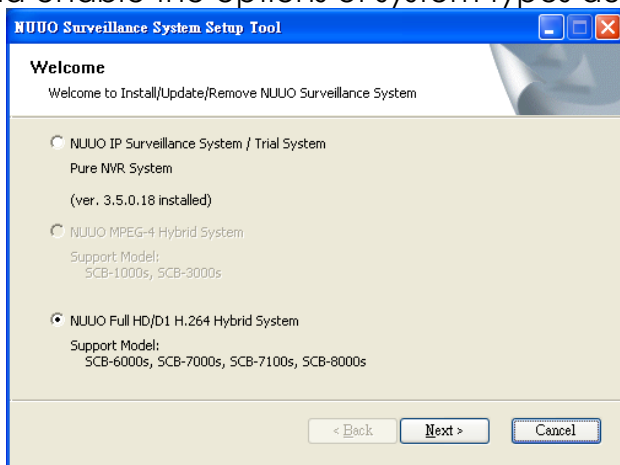
Step 4: There are 2 Installation Mode of options in "Initiation Mode" window, select one and click Next to start the installshield of Server package.



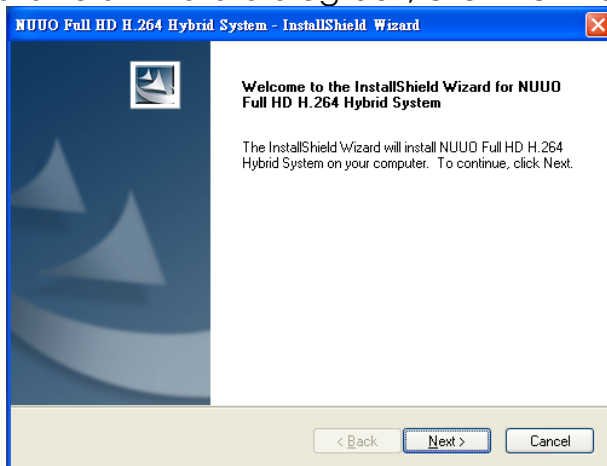
Step 3: There are 4 system types of options in “System Setup Tool” window, select one and click Next to start the installshield of Server package.

- NUUO IP Surveillance System/Trial System
- NUUO MPEG-4 Hybrid System
- NUUO Full HD/D1 H.264 Hybrid System

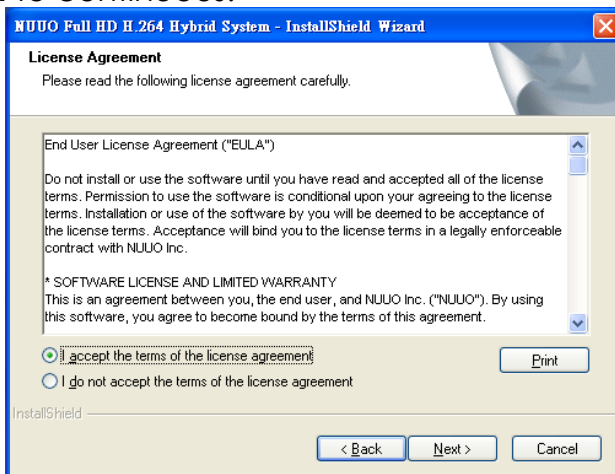
Note: The Setup Tool will detect the type of capture cards installs on PC and enable the options of system types automatically.



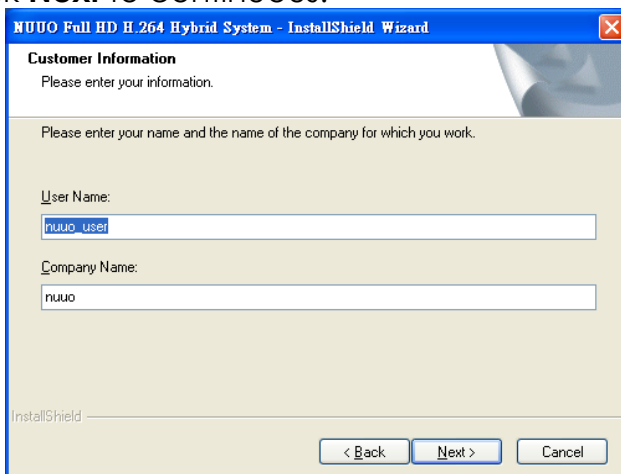
Step 4: In the InstallShield Wizard dialog box, click **Next** to continuous.



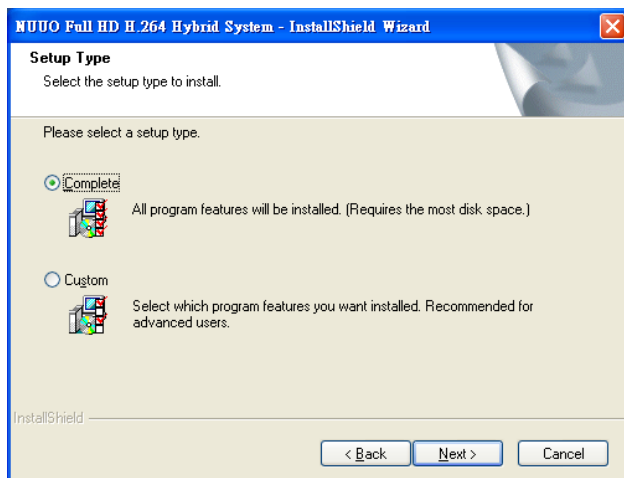
Step 5: Check the option "I accept the terms of the license agreement". Click **Next** to continuous.



Step 6: Please enter your name and the company name for which you work. Click **Next** to continuous.



Step 7: Select “Complete Setup Type” or “Custom Setup Type” to install the System.



COMPLETE SETUP TYPE

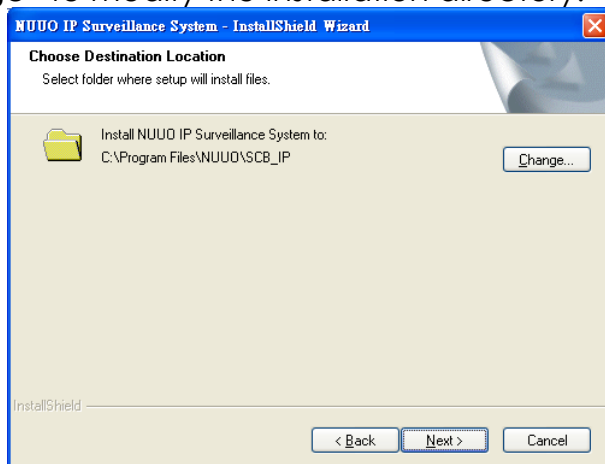
Install all program features into the default directory.

- Check the option “**Complete**”, and then click “**Next**”. All program features will be installed. [Require the most disk space.]

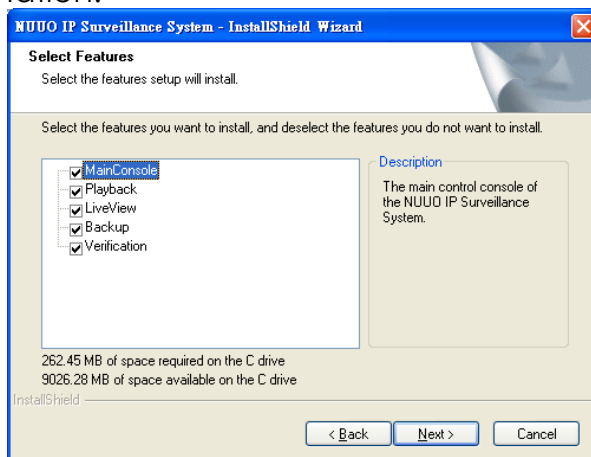
CUSTOM SETUP TYPE

Install the system to a preferred directory. Or select whichever program feature(s) to install. This is recommended for advanced users.

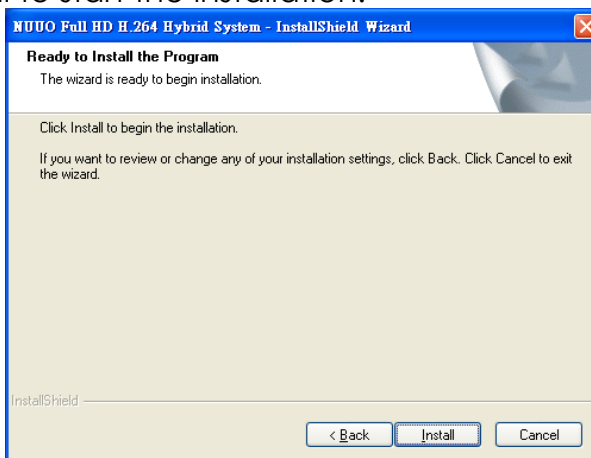
- Check the option “**Custom**”, and then click “**Next**”.
- Select appointed folder where setup will install files to. Click “**Change**” to modify the installation directory.



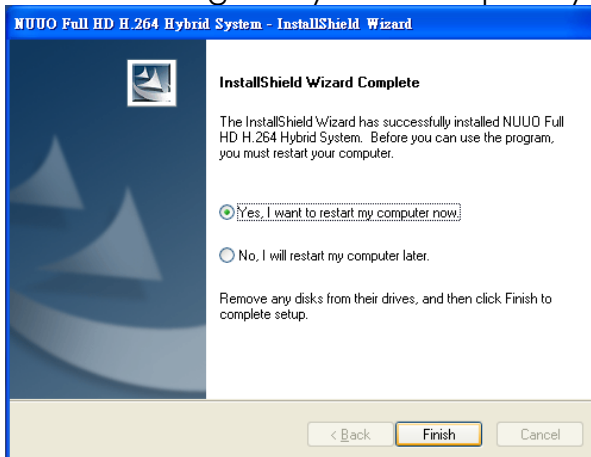
- Select the features setup will install. There are 4 features to choose in the server setup process: MainConsole, Playback, LiveView, Backup, and Verification tool. Click “**Next**” after confirmation.



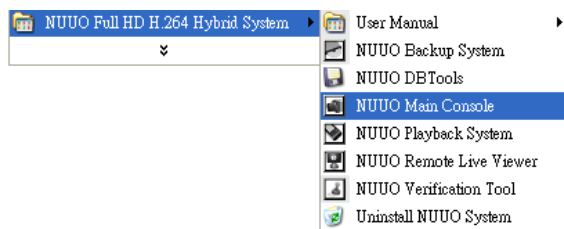
Step 8: Click install to start the installation.



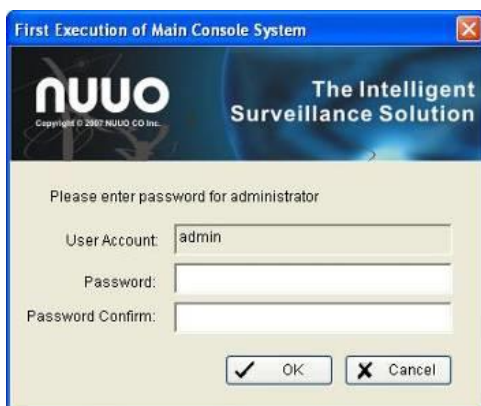
Step 9: Click Finish after installing the system completely.



Step 10: Execute the Main Console

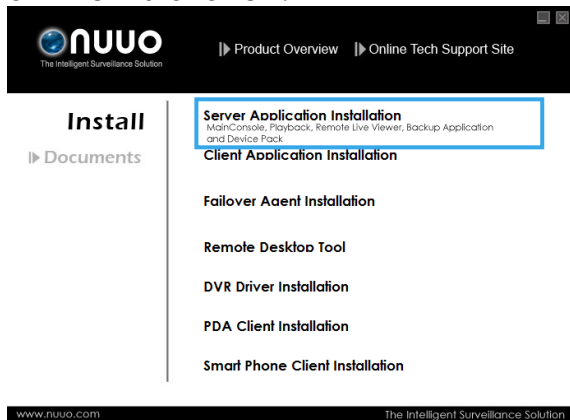


Step 11: Enter the password you like into the edit box and enter again at the edit of Password Confirm. And then press "OK". Now enjoy our Intelligent Surveillance Solution.



SOFTWARE INSTALLATION – EXPRESS MODE

Step 1: Insert the Installation CD. Run Autorun Tool from the CD-ROM directly to start the installation.

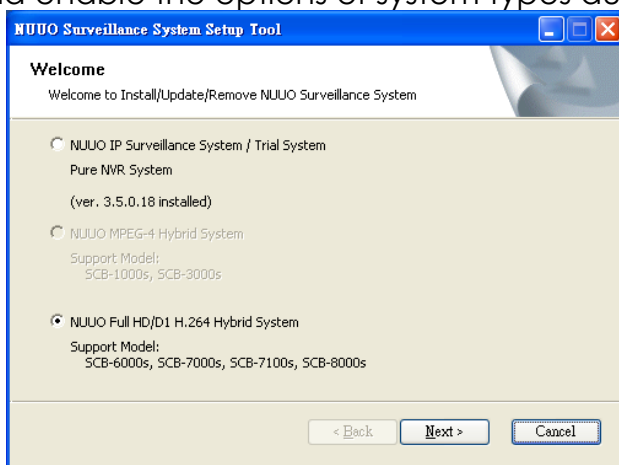


Step 2: Select “Server Application Installation” then click on it.

Step 3: There are 4 system types of options in “System Setup Tool” window, select one and click Next to start the installshield of Server package.

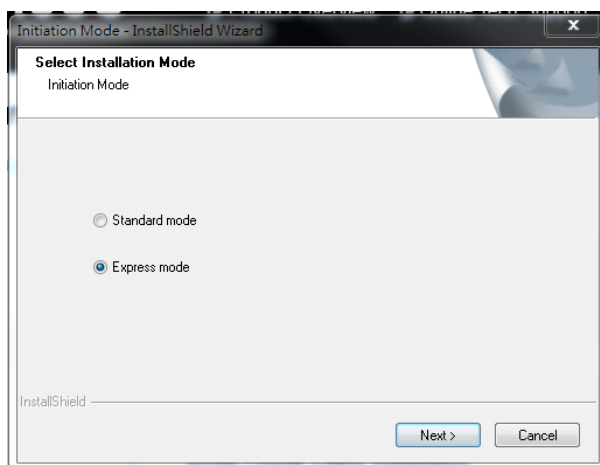
- NUUO IP Surveillance System/Trial System
- NUUO MPEG-4 Hybrid System
- NUUO Full HD/D1 H.264 Hybrid System

Note: The Setup Tool will detect the type of capture cards installs on PC and enable the options of system types automatically.

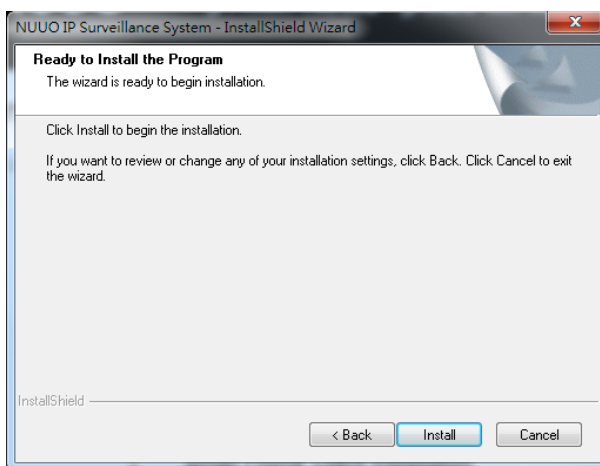


Step 4: In the InstallShield Wizard dialog box, select language and click **Next** to continuous.

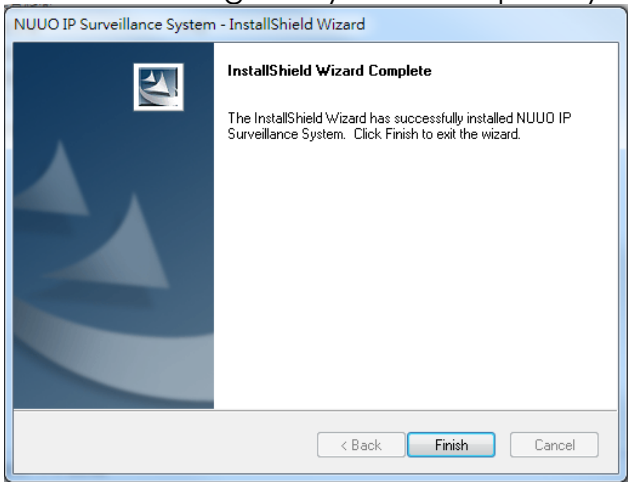
Step 5: There are 2 Installation Mode of options in “Initiation Mode” window, select one and click Next to start the installshield of Server package.



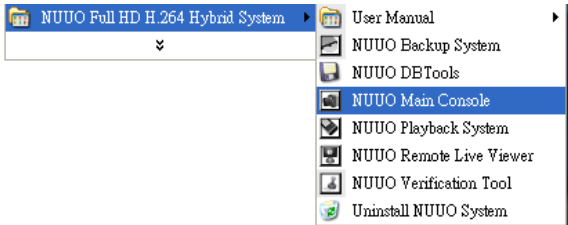
Step 6: Click install to start the installation.



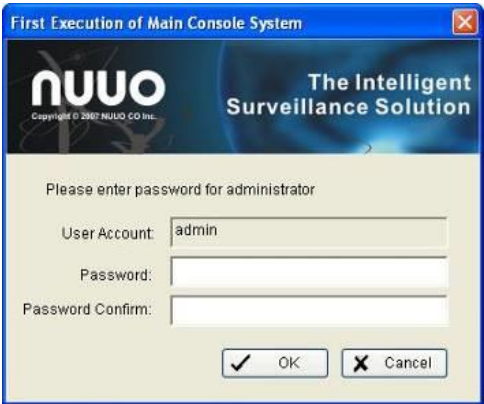
Step 7: Click Finish after installing the system completely.



Step 8: Execute the Main Console

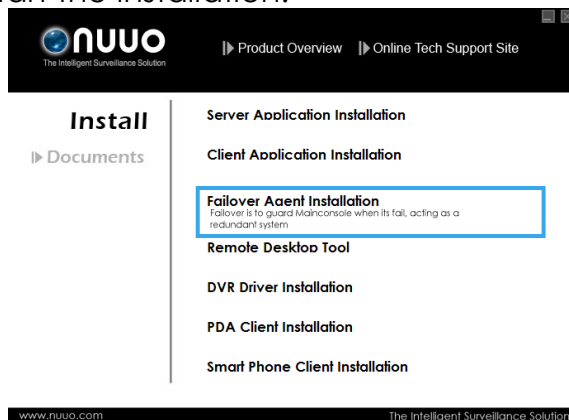


Step 9: Enter the password you like into the edit box and enter again at the edit of Password Confirm. And then press “OK”. Now enjoy our Intelligent Surveillance Solution.



SOFTWARE INSTALLATION – FAILOVER AGENT (STANDARD MODE)

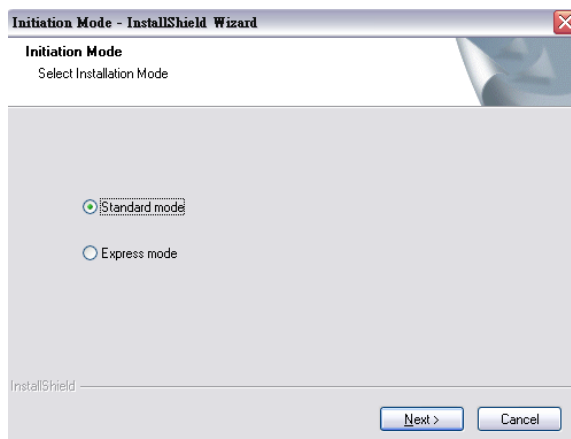
Step 1: Insert the Installation CD. Run Autorun Tool from the CD-ROM directly to start the installation.



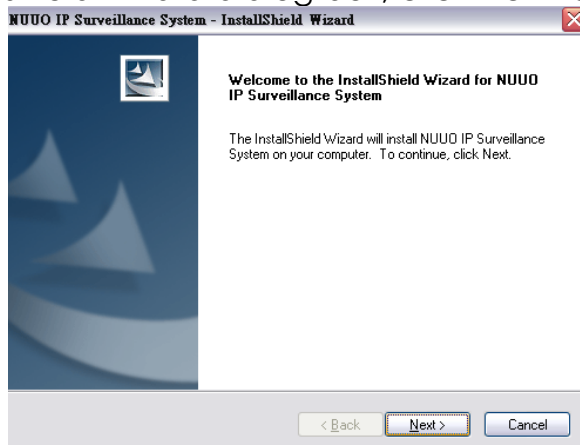
Step 2: Select “Failover Agent Installation” then click on it.

Step 3: In the InstallShield Wizard dialog box, select language and click **Next** to continuous.

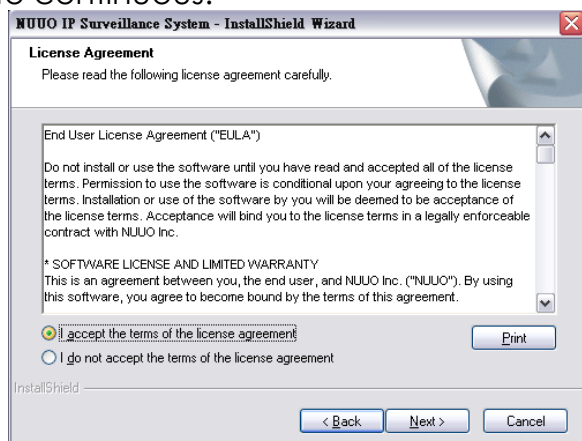
Step 4: There are 2 Installation Mode of options in “Initiation Mode” window, select one and click Next to start the installshield of Server package.



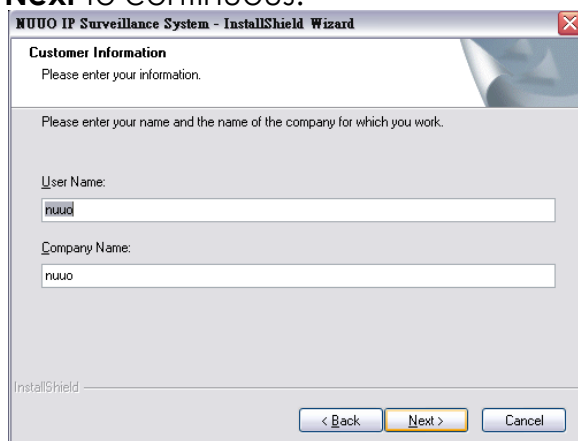
Step 5: In the InstallShield Wizard dialog box, click **Next** to continuous.



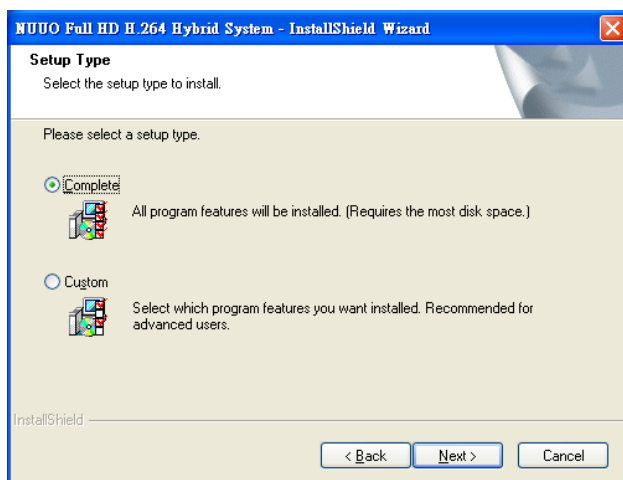
Step 6: Check the option "I accept the terms of the license agreement". Click **Next** to continuous.



Step 7: Please enter your name and the company name for which you work. Click **Next** to continuous.



Step 8: Select “Complete Setup Type” or “Custom Setup Type” to install the System.



COMPLETE SETUP TYPE

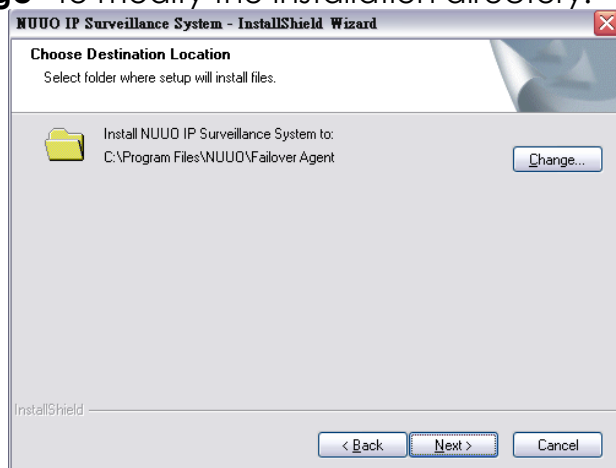
Install all program features into the default directory.

- Check the option “**Complete**”, and then click “**Next**”. All program features will be installed. [Require the most disk space.]

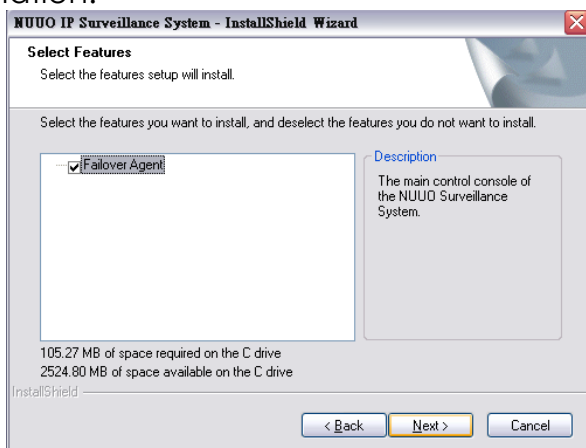
CUSTOM SETUP TYPE

Install the system to a preferred directory. Or select whichever program feature(s) to install. This is recommended for advanced users.

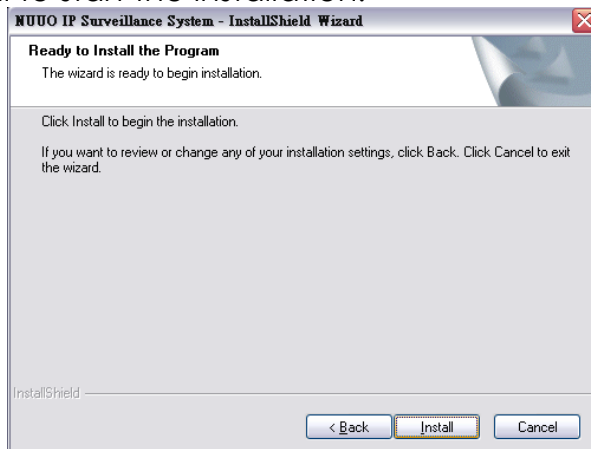
- Check the option “**Custom**”, and then click “**Next**”.
- Select appointed folder where setup will install files to. Click “**Change**” to modify the installation directory.



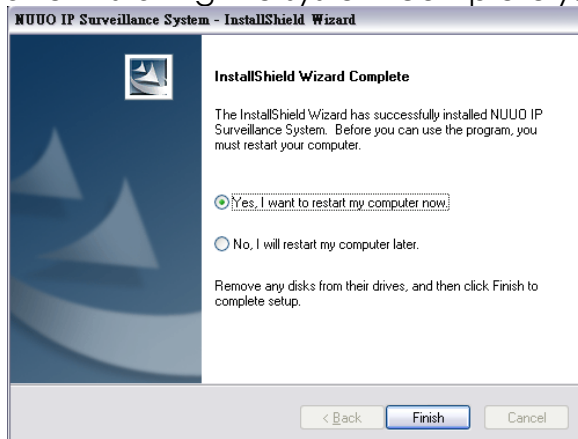
- Select the features setup will install. Click **“Next”** after confirmation.



Step 8: Click install to start the installation.



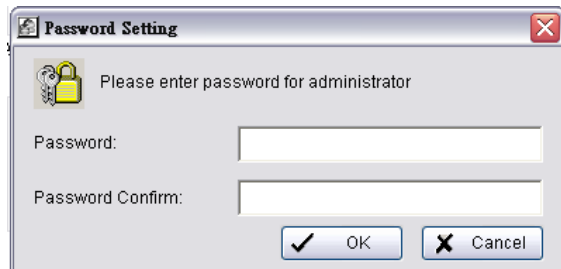
Step 9: Click Finish after installing the system completely.



Step 10: Execute the Failover Agent



Step 9: Enter the password you like into the edit box and enter again at the edit of Password Confirm. And then press “OK”. Now enjoy our Failover Agent service.



SOFTWARE INSTALLATION – FAILOVER AGENT (EXPRESS MODE)

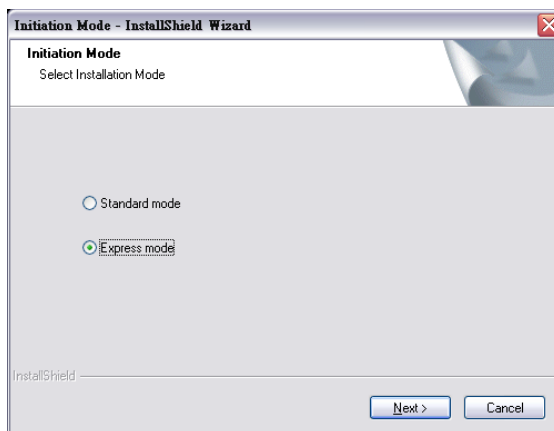
Step 1: Insert the Installation CD. Run Autorun Tool from the CD-ROM directly to start the installation.



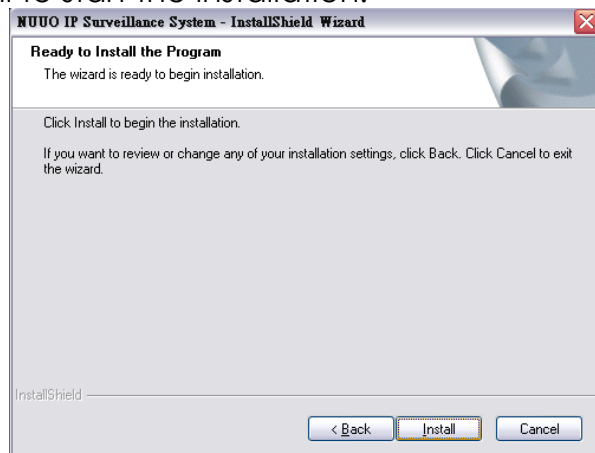
Step 2: Select “Failover Agent Installation” then click on it.

Step 3: In the InstallShield Wizard dialog box, select language and click **Next** to continuous.

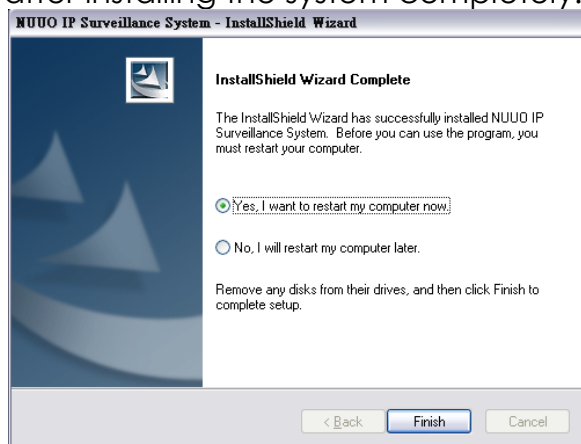
Step 4: There are 2 Installation Mode of options in “Initiation Mode” window, select one and click Next to start the installshield of Server package.



Step 5: Click install to start the installation.



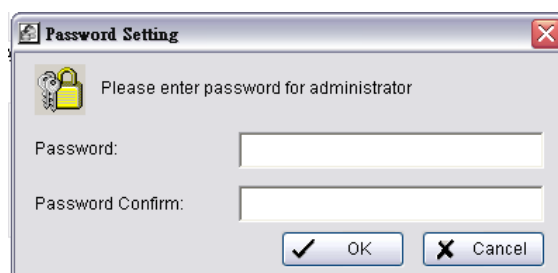
Step 6: Click Finish after installing the system completely.



Step 7: Execute the Failover Agent



Step 8: Enter the password you like into the edit box and enter again at the edit of Password Confirm. And then press “OK”. Now enjoy our Failover Agent service.



Note: When use Windows 8, please disable Metro function first before start Mainconsole. For further steps, please refer to:

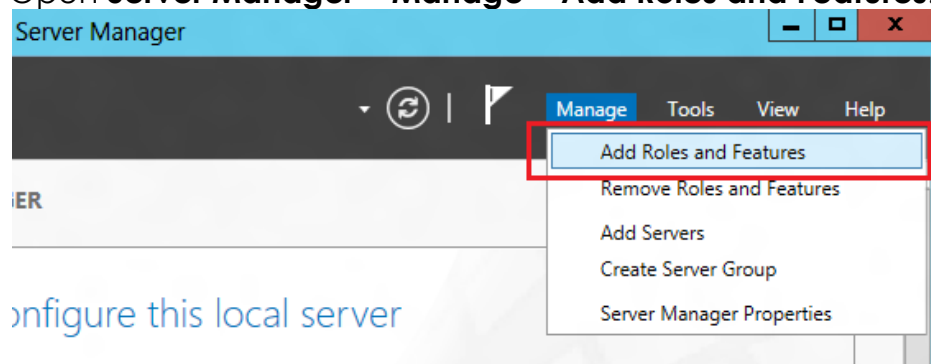
<http://www.youtube.com/watch?v=xERxpbwBt0U>

Note: When use Windows Server 2012, please enable desktop experience first before start Mainconsole. For further steps, please refer to:

<http://social.technet.microsoft.com/wiki/contents/articles/10531.windows-server-8-beta-how-to-enable-desktop-experience-feature-en-us.aspx>

the Desktop Experience feature in Windows Server 8 Beta belongs to **User Interfaces and Infrastructure** feature. In order to install Desktop Experience feature, do the following steps:

Open **Server Manager > Manage > Add Roles and Features**.



Before you begin to install a feature, you can read information in the **Before you begin** page. This page is very useful for anyone who has started learning Windows Server 8. Select **Skip this page by default** in order to remove this page for the next times you add roles or features.

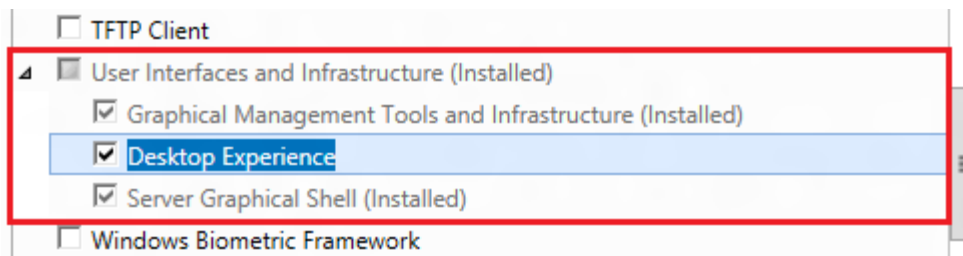
In the **Select installation type** page, you have two options:

1. Role-based or feature-based installation: this option that similar to the one available in the Windows Server 2008 is used when you want to add roles, features in single server.
2. Remote Desktop Services scenario-based installation this option allows you to install, configure and manage RS session Host servers from a central location.

In the **Select destination server** page, select the server pool under **SERVER POOL**. With flexible server platform, now you can select a virtual hard disk

as a destination server when deployed roles or features.

Skip the **Select server roles** page. In the **Select features** page, you can select User Interfaces and infrastructure feature. You will be prompted to install the required components or services “**Ink and Handwriting Services**” and “**Media Foundation**”. Click **Add Features**.



In the **Confirm installation selections** page, select **Restart the destination server automatically if required**. You must restart computer after installing completely.

You have another way to add feature by using Powershell:
Add-WindowsFeature Desktop-Experience.

APPENDIX - MINIMUM HARDWARE REQUIREMENT

Please refer NUUO online Design Tool for sever spec evaluation:

<http://www.nuuo.com/calculator/>