

NUUO Thermal Plugin

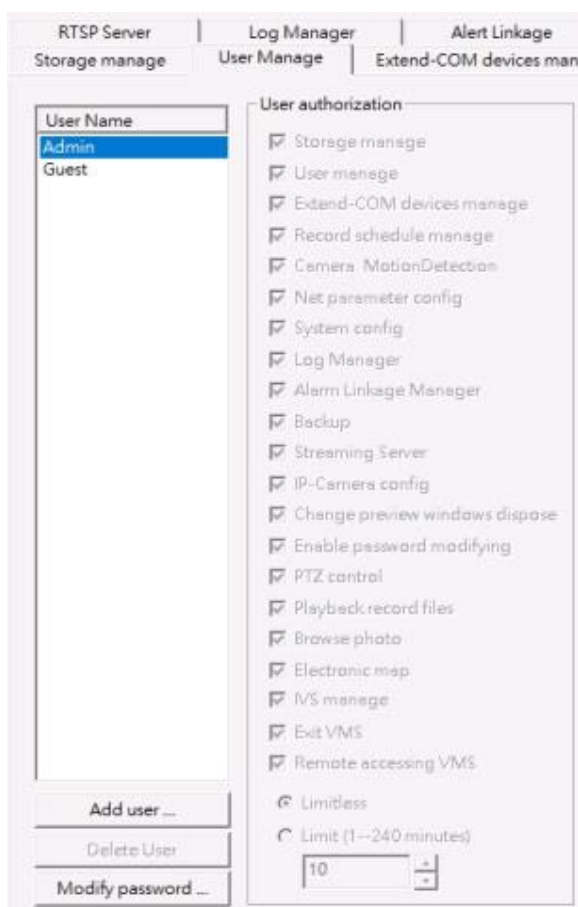
1. Plugin Install Folder

- 1.1 Copy the folder of 'MetadataModelNuThermal' includes the **MetadataModelNuThermal.dll** file to the Mainconsole's **PluginPack** folder.

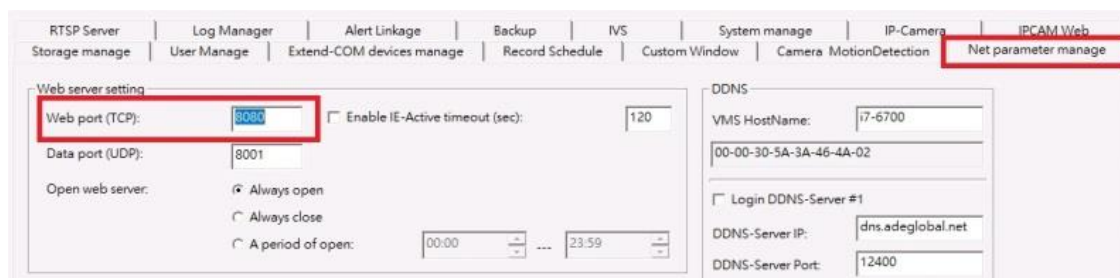
Note that the **w32** and **x64** versions of Mainconsole and NuThermal Plugin must be matched.

2. 3rd Party Software Installation & Setup

- 2.1 Set Username and Password for login (default is admin, password is blank)



- 2.2 Set Web Service Port (default is 80, in this example it is changed to 8080)



- 2.3 Verify 3rd Party Software installation: If 3rd Party Software is installed on 10.0.4.3 and the Web Port is 8080, enter the following URL in Chrome (or other browser):

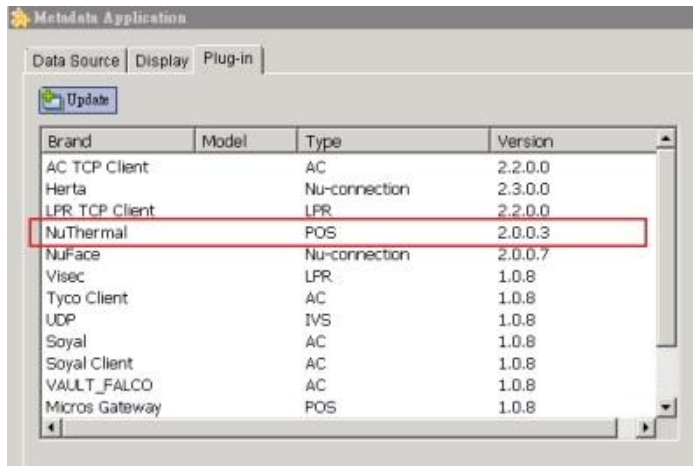
NUUO Thermal Plugin

http://10.0.4.3:8080/core.cgi?command=get_camera_list

Once key-in the account password (default is admin / blank), you can see the response text of 3rd Party Software on Chrome.

3. Set NuThermal Plugin

3.1 In Metadata Application / Plug-in, you can see NuThermal, use POS License



Brand	Model	Type	Version
AC TCP Client		AC	2.2.0.0
Herta		Nu-connection	2.3.0.0
LPR TCP Client		LPR	2.2.0.0
NuThermal		POS	2.0.0.3
NuFace		Nu-connection	2.0.0.7
Visec		LPR	1.0.8
Tyco Client		AC	1.0.8
UDP		IVS	1.0.8
Soyal		AC	1.0.8
Soyal Client		AC	1.0.8
VAULT_FALCO		AC	1.0.8
Micros Gateway		POS	1.0.8

3.2 Set Metadata Plugin Source



The screenshot shows a dialog box titled "Metadata Source Setting". It contains a "Settings" section with the following fields and controls:

- Name:** A text input field containing "test".
- Metadata Type:** A dropdown menu with "POS" selected.
- Source Type:** A dropdown menu with "NuThermal" selected.
- Test Connection:** A button located to the right of the Source Type dropdown.
- Server IP:** A text input field containing "10.0.4.3".
- Server HTTP Port:** A text input field containing "8080".
- User Name:** A text input field containing "admin".
- Password:** An empty text input field.

At the bottom right of the dialog box are "OK" and "Cancel" buttons.

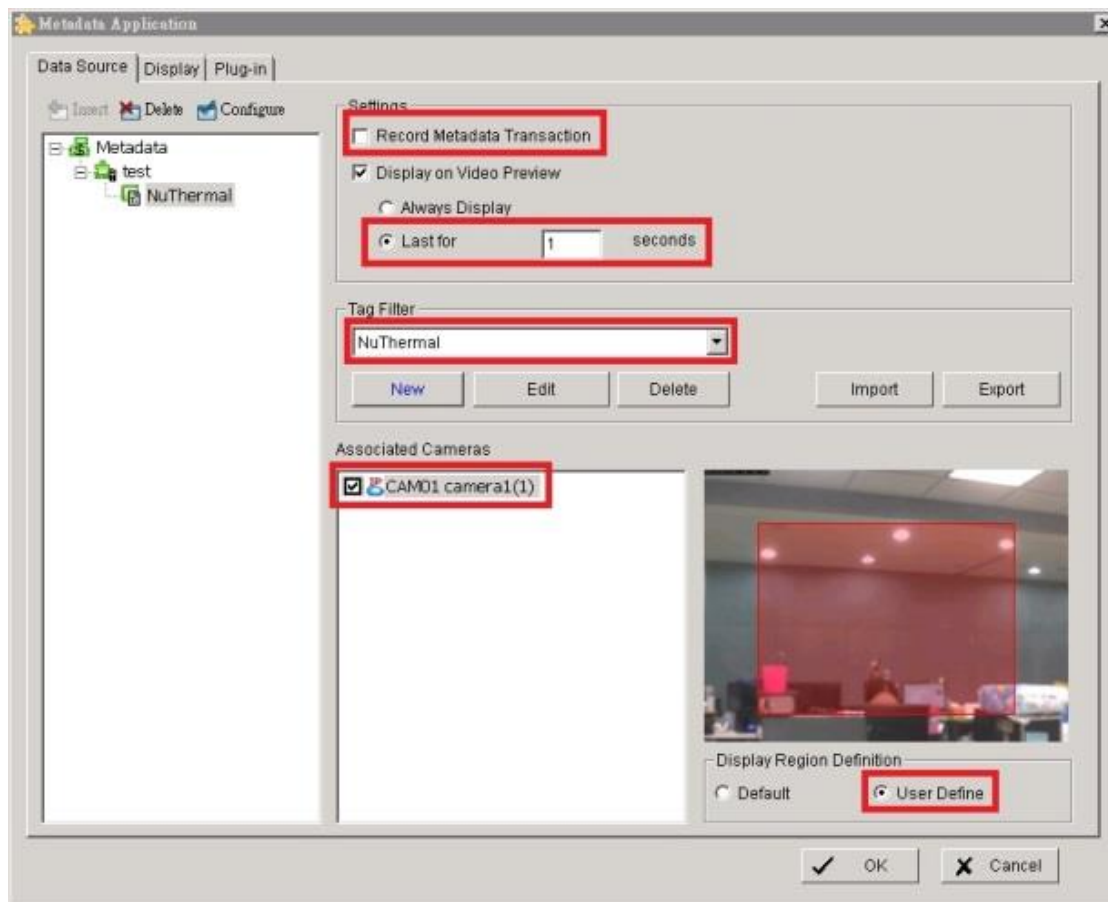
Server IP: The IP address of the PC where is the 3rd Party Software, in this example is 10.0.4.3.

Server HTTP Port: Web Port of 3rd Party Software, this example is 8080

User Name / Password: The default is admin / blank, can be reset on 3rd Party Software

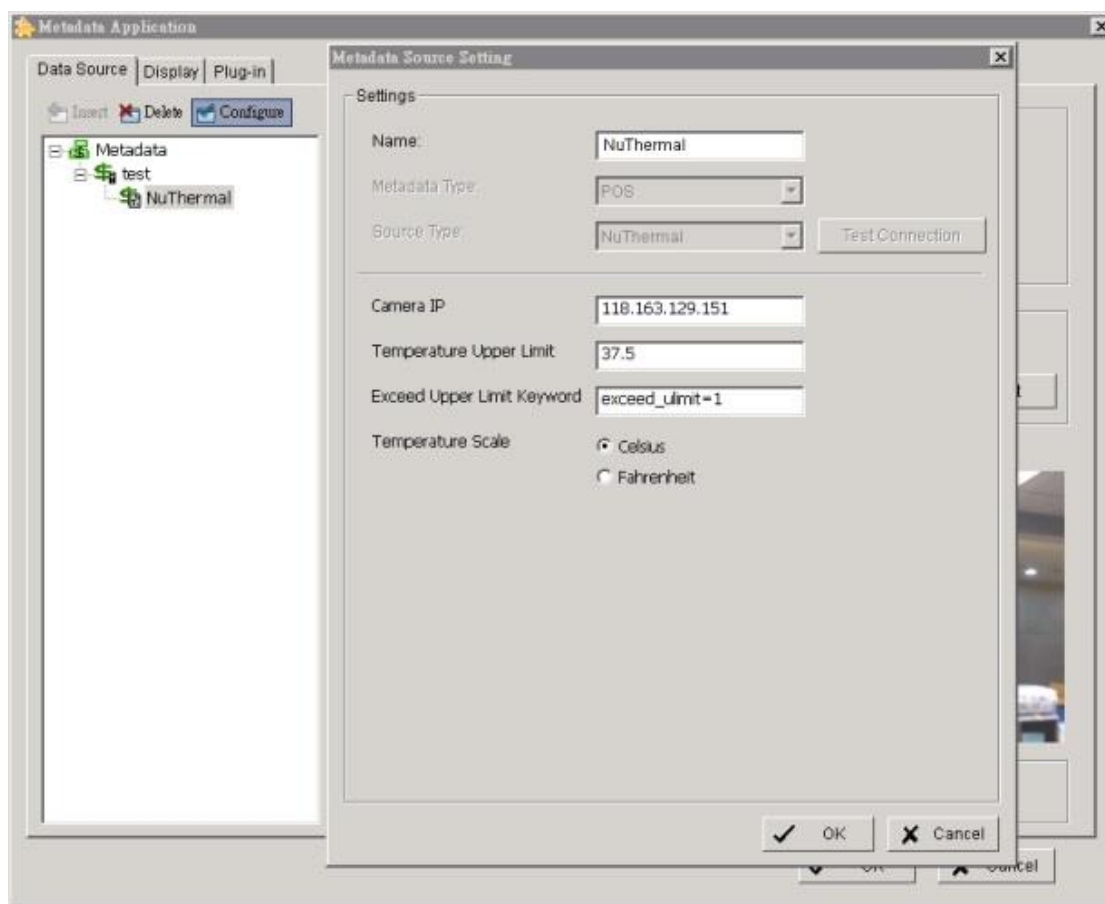
NUUO Thermal Plugin

3.3 Set Metadata Node



- 3.3.1 Because NuThermal's metadata will update by per second, the amount of metadata will be large (15MB / per ch-per day), so in order to reduce the load on the metadata database, recommended to disable record metadata transactions ; If you want to find events which with high temperature, you can use SmartGuard's metadata user-defined events, which will be more efficient to use (compare with recording all metadata transactions and then using metadata search is not very efficient)
- 3.3.2 Supplementary Note: If Playback NuThermal Metadata Transaction is required in the site, then you can only select Enable Record Metadata Transaction
- 3.3.3 Select Display on Video Preview / Last for 1 second, only the latest Thermal Transaction will be displayed
- 3.3.4 Set the Tag Filter of NuThermal; It can also be downloaded from the NUUO official website: <https://www.nuuo.com/DownloadDetail.php?id=0159>
- 3.3.5 Associated Cameras are set up and can be assigned to multiple Cameras at the same time.
- 3.3.6 Select Display Region Definition
- 3.3.7 In this example, click "NuThermal", then press Button **Configure**

NUUO Thermal Plugin



3.4 Set Metadata Channel

3.4.1 **Camera IP:** It is the IP address of Thermal Camera

3.4.2 **Temperature Upper Limit:** If the detected temperature exceeds this temperature, the default Metadata Transaction will include the string "exceed_ulimit = 1"; this string can be changed, see below for details.

3.4.3 **Exceed Upper Limit Keyword:** The default value is "exceed_ulimit = 1", when the Temperature Upper Limit is exceeded, it will appear in Metadata Transaction

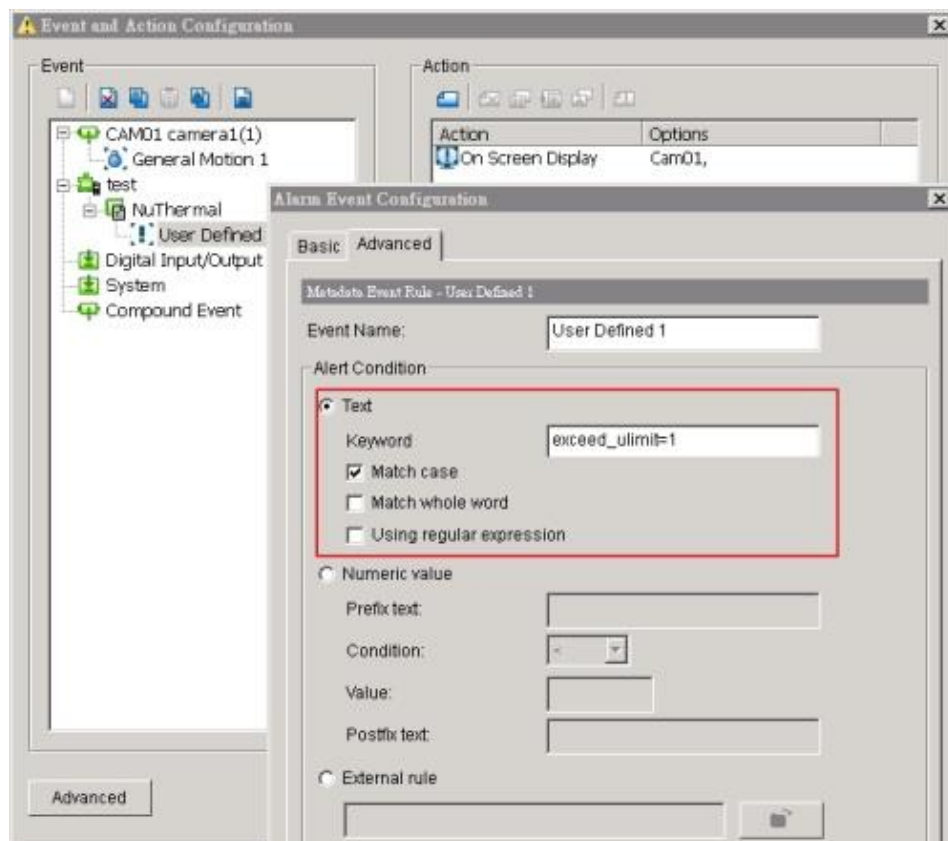
3.4.4 **Temperature Scale:** You can choose the temperature in **Celsius** or **Fahrenheit**.

The Temperature Upper Limit should be adjusted by the user.

After completing the above settings, you can see Metadata Transaction on the Associated Camera.

NUUO Thermal Plugin

4. SmartGuard Setting



- 4.1 Under **NuThermal**, select **User Defined Event**
- 4.2 In Advanced, set the **Alert Condition** to Keyword as exceed_ulimit = 1, (default value, see 3.4.3 for details), as shown above.
- 4.3 User can configure the corresponding SmartGuard Action.
- 4.4 Start SmartGuard, when the temperature is too high, it can be observed Event is triggered.
- 4.5 Can find SmartGuard **Metadata Event Log** from the **Log Viewer**.

